



LIVERMORES
THE ESTATE AGENTS

3 Bedrooms

House - Terraced

Located in Dartford

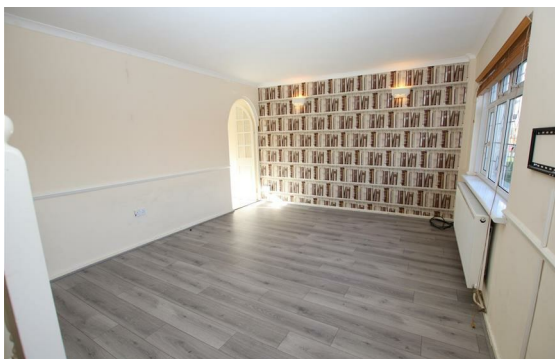
£1,950



lettings@livermores.co.uk

www.livermores.co.uk

01322 311427



Welcome to this three-bedroom terraced house located on Lunedale Road in Dartford. This property is now available to rent and offers a wonderful opportunity for families or professionals seeking a comfortable home in a convenient location.

As you enter, you will find a spacious reception room that provides a warm and inviting atmosphere, perfect for relaxing or entertaining guests. The open plan kitchen and dining area is a standout feature, offering a modern space for cooking and enjoying meals with family and friends. This layout enhances the sense of space and light throughout the ground floor.

The property boasts three bedrooms, providing ample room for rest and personal space. The bathroom is functional and well-maintained, catering to the needs of the household.

Energy Efficiency Rating: C

Agents Note: Whilst every care has been taken to prepare these particulars, they are for guidance purposes only. All measurements are approximate and are for general guidance purposes only and whilst every care has been taken to ensure their accuracy, they should not be relied upon and potential buyers/tenants are advised to recheck the measurements.

LIVERMORES
THE ESTATE AGENTS

1 Hythe Street
Dartford
Kent
DA1 1BE

01322 311427

lettings@livermores.co.uk

www.livermores.co.uk